



SiteStat™

Family of Thermostats and Sensors

The SiteStat product family is a series of communicating thermostats and sensors, designed for new or retrofit commercial and small office applications. The SiteStat thermostat is an easy-to-use, low profile surface mount unit with built-in functions for flexible environmental control. Using companion remote sensors with the SiteStat thermostat enables features such as room temperature averaging, return air duct temperature sensing, and the display of outdoor temperature. Additional peripherals permit networking SiteStats and sensors together with Andover's network controllers, for the greatest flexibility in installation and configuration.

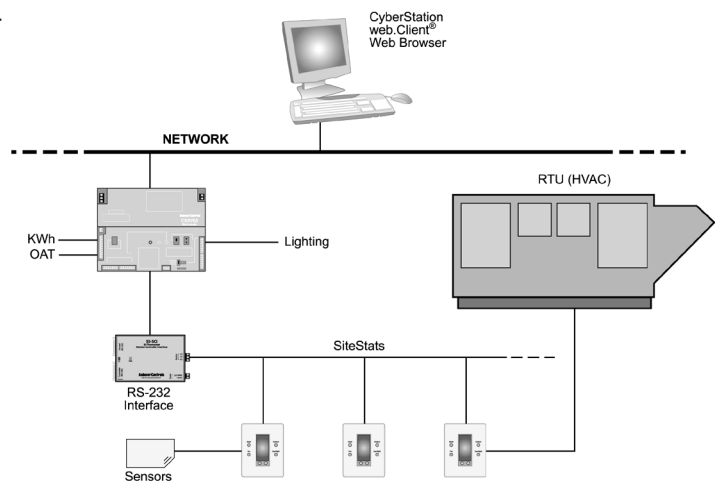
SOPHISTICATED CONTROL IN AN ELEGANT PACKAGE

SiteStat thermostats are both communicating thermostats *and* stand-alone fixed-function HVAC controllers, connected directly to HVAC equipment. Each thermostat is capable of sending and receiving commands from network controllers through an Andover Controls *Plain English*® communications driver. These commands control the SiteStat's schedules, setpoints, and operating modes, and also permit room temperature and status to be read from the mounted location.

The SiteStat uses fuzzy logic algorithms to monitor the changes in room temperature and run equipment more efficiently. Additionally, these algorithms provide appropriate control of staged heating and cooling to minimize cycling of equipment.

The SiteStat is easily calibrated and customized using combination button sequences. After installation, thermostats are configured using simple web pages built in at the controller. A standard Internet browser is all that is needed to change setpoints, schedules, and operating parameters.

- Easy-to-use thermostat controller
- Applications:
 - Fan Coil Units
 - Heat Pumps
 - Unit Heaters
 - Packaged RTUs
 - Packaged Heating/Cooling
- Easy-to-read vertical display
- Web-based user interface allows simple schedule changes
- View thermostat logs and run trend reports
- Connects directly to HVAC equipment
- Retrofits most old thermostat installations
- Single and multi-stage models
- Fuzzy logic algorithms improve operating efficiency and control
- Retains setpoints and operating modes through power failures
- Supports up to six remote sensors, plus one outdoor air sensor



Small Building Control Application



The SiteStat

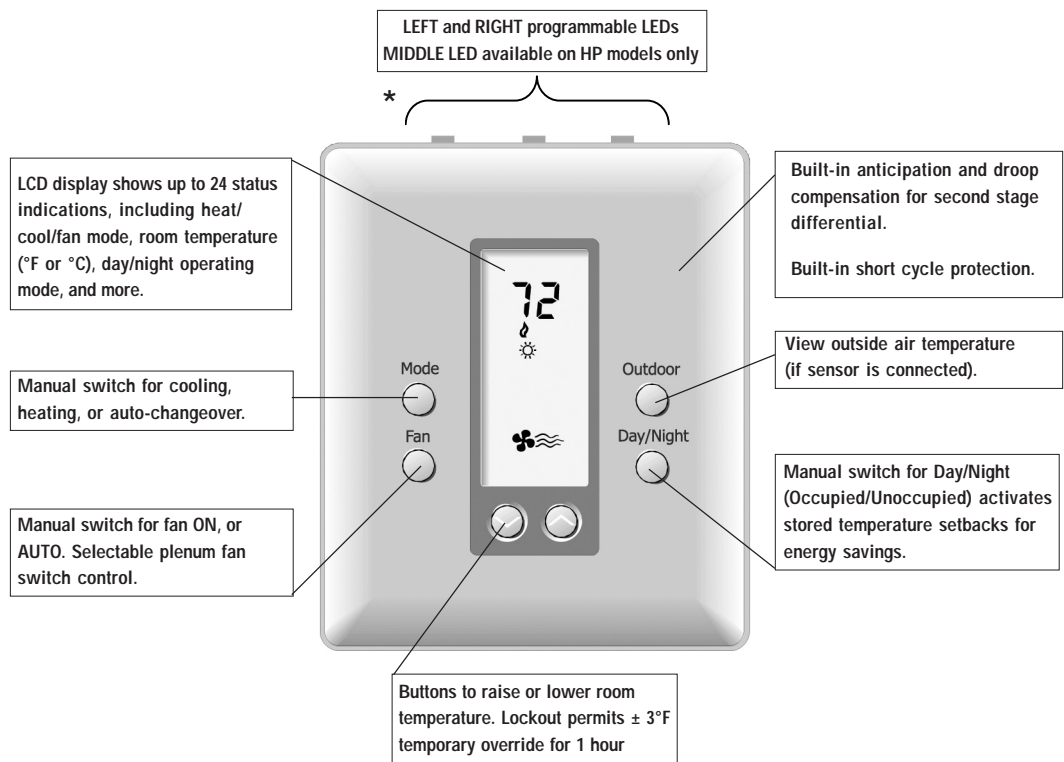
SiteStat thermostats are made with durable ABS plastic, and housed in an attractive, low profile surface mount kit. A large vertical LCD display provides complete operating status. A direct-wire sub-base mounts to standard vertical outlet boxes or any drywall surface using the hardware provided.

FOUR MODELS FOR ANY APPLICATION

Model Number	Description
SS-SS-1H1C:	Single-stage Gas/Electric, 1 Heat / 1 Cool stage, auto changeover
SS-MS-2H2C:	Multi-stage Gas/Electric, 2 Heat / 2 Cool stage, auto changeover
SS-HP-2H1C:	1-Compressor Heat Pump, 2 Heat / 1 Cool stage, auto changeover
SS-HP-3H2C:	2-Compressor Heat Pump, 3 Heat / 2 Cool stage, auto changeover

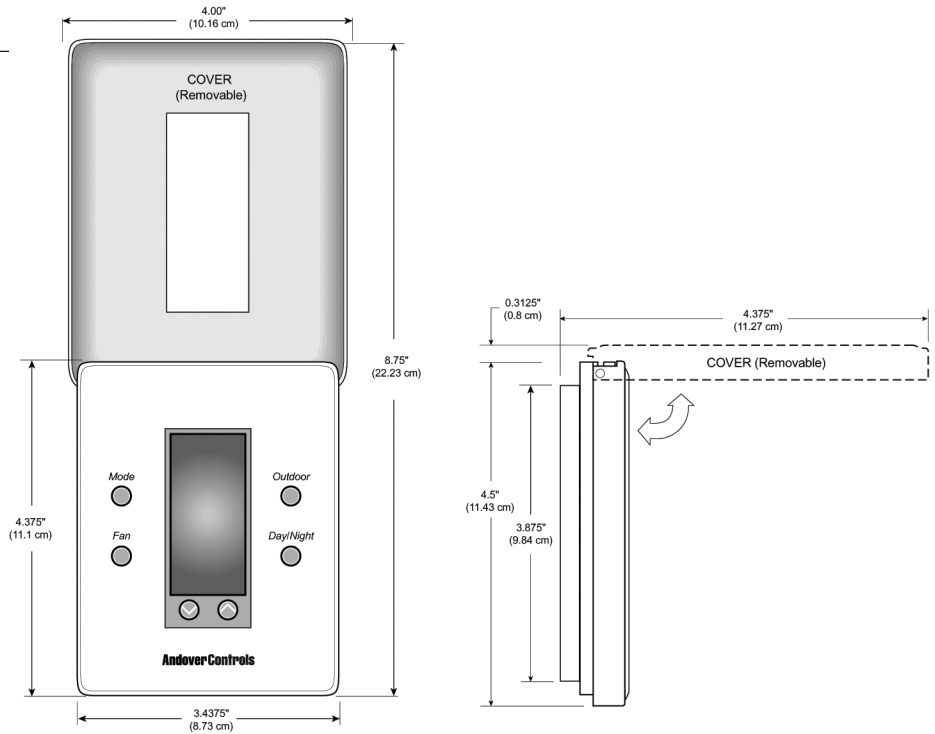
LARGE DISPLAY AND INTUITIVE CONTROLS

A large LCD display and intuitive manual override buttons make the SiteStat simple to use. To prevent tampering or manual changes, simply configure the SiteStat to lockout the keypad. During lockout, occupants can change temperature settings up or down by only 3°F, and for only one hour.

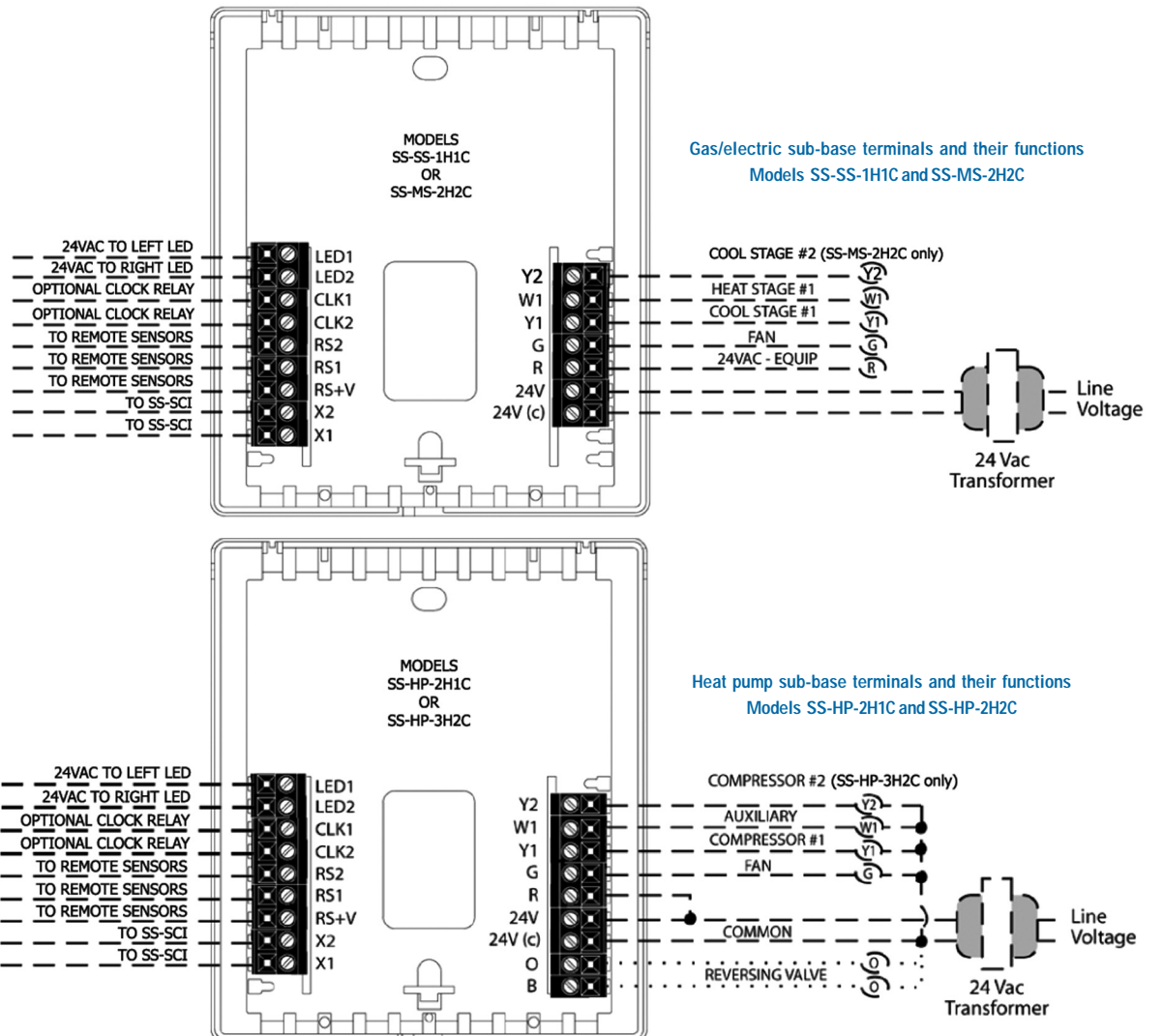


* LEDs not available on SS-SS-1H1C model

DIMENSIONAL DRAWING



TERMINALS



SITESTAT CONTROLLER INTERFACE



Model Number : SS-SCI

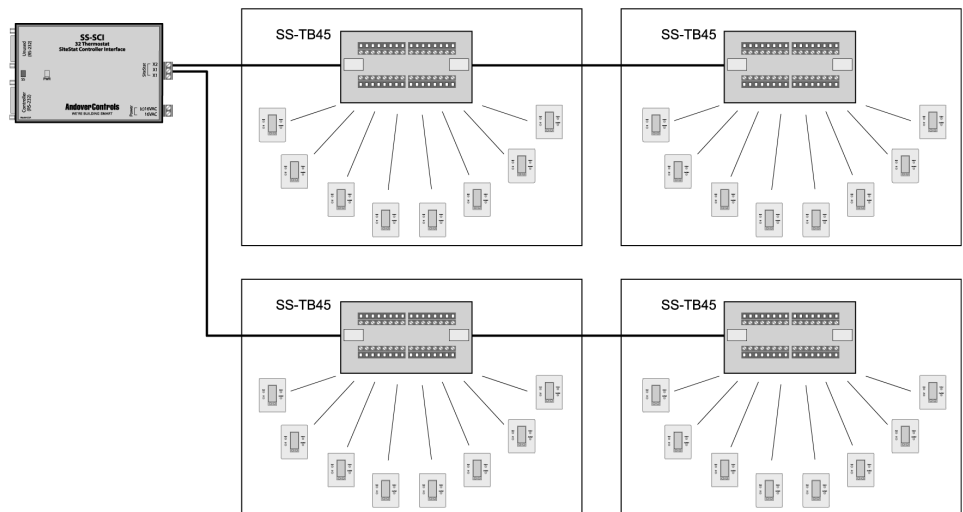
The SiteStat Controller Interface (SCI) is a serial communications device that enables an Andover network controller to send and receive commands to and from each SiteStat thermostat. One end of the SCI connects to the RS-232 serial port on a network controller. Two-wire communications then link the SCI to each thermostat using one or more networking options shown below.

One SCI is required for each network controller, and supports communications for up to 32 thermostats. The SCI converts *Plain English*® commands to the SiteStat's internal protocol.

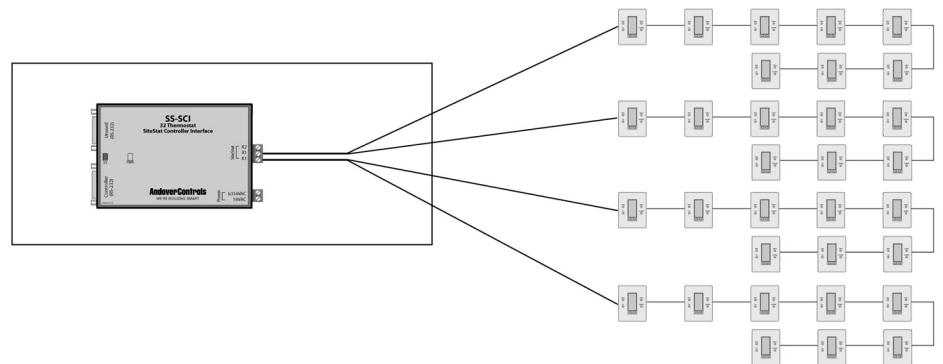
SS-SCI Specifications:

Power Terminals:	16 VAC nominal, ± 20%, 16 VAC power wall pack included
Rated AC Current:	200 mA maximum
Green PWR LED:	blinking = normal operation steady = system interruption occurred
Red SS LED:	flashing = normal communications
Dimensions:	3.6"H x 6.25"W x 0.875"D (91mm x 159mm x 22mm)
X2 Terminal:	Common (-) from thermostats
X1 Terminals (2):	Data (+) from thermostats
RS-232 Ports (2):	1) Controller DB9 female, 2) For future use
Cable Supplied:	RJ-45 to DB9 male serial cable included, 4' (1219mm)

NETWORKING OPTIONS



Multi-Drop Configuration



Daisy Chain Configuration

Note: Both Multi-drop and daisy chain configurations can be mixed from a single SiteStat Controller Interface

SPECIFICATIONS

ELECTRICAL

Rated Voltage:	20 to 30 VAC, 50-60 Hz, Class 2, 24 VDC nominal
Rated AC Current:	0.05 to 0.75 A continuous per output, with surges to 3 A maximum
Rated DC Current:	0.0 to 0.75 A continuous per output, with surges to 3 A maximum
Power Terminations:	24V - power, 24V(c) - power common, (SS-PWR24 not included)
Inputs (LED1, LED2, CLK1, & CLK2):	20-30 VAC or 22-30 VDC (negative on 24(c) terminal). Switches at 2 VDC
Recommended Wire:	Category 5 Unshielded Twisted Pair (CAT5 UTP), 4 pair, 24 AWG (CAT5 Belden 1583 PVC or Plenum, or CAT5e Belden 1583A PVC or Plenum)

Note: No battery required (maintains last setpoint/mode of operation following power outages).

CONTROL RANGES

Heating Range:	38 to 88°F in 1° steps (6 to 30°C in 1° steps)
Cooling Range:	60 to 108°F in 1° steps (16 to 40°C in 1° steps)
Measurement Range:	28 to 124°F or 0 to 48°C
Measurement Units:	°F or °C, configurable using keypad
Outdoor Indication:	-50 to 124°F or -48 to 48°C
Control Accuracy:	± 1°F @ 68°F (0.5°C @ 20°C)
Minimum Deadband:	2°F or 1°C (between heating and cooling)
Changeover:	Automatic from heat-to-cool and cool-to-heat
On/off time:	Selectable minimum time (2 or 4 minutes)
Addressing:	Selectable between 01 and 32

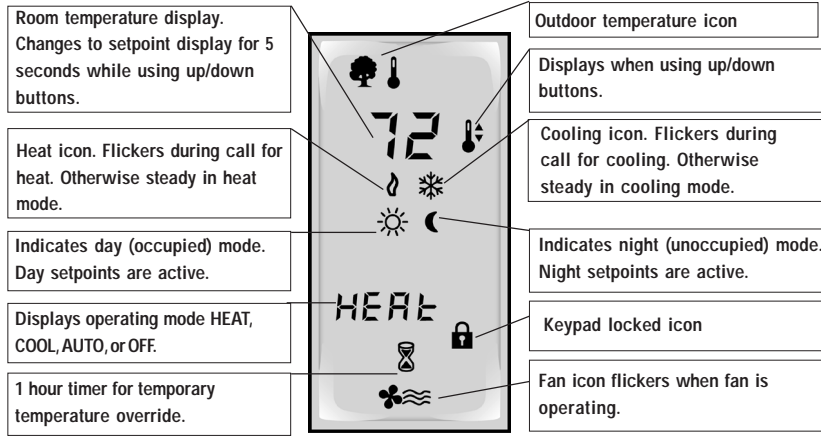
MECHANICAL

Dimensions:	4.5" H x 4" W x 7/8" D (114mm x 102mm x 22mm)
Button Lockout:	Internal dip switch disables all buttons except temperature up/down
Cover Lock:	Adapter included for optional locking

AGENCY LISTINGS

UL and cUL Listing:	UL 873 Multiple Class 2 Device, UL94HB Plastic Enclosure
FCC Compliance	Class A digital device, Class B Part 15

DISPLAY ICONS



REMOTE SENSORS

SITESTAT REMOTE INDOOR AIR TEMPERATURE SENSOR

Model Number: SS-IDS

Connects directly to SiteStat. Up to 6 sensors can be daisy-chained together. Automatic averaging for multiple sensors. 3-wire connection to SiteStat. Dimensions: 3.5" x 2.5" x 3/4" (88.9mm x 63.5mm x 19.0mm).

SITESTAT REMOTE OUTDOOR AIR TEMPERATURE SENSOR

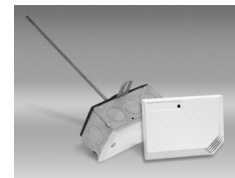
Model Number: SS-ODT

Connects directly to SiteStat. One sensor per SiteStat. Outdoor Temperature displays on SiteStat. Works with or without Remote Indoor Sensor. 3-wire connection to SiteStat. Dimensions: 3.5" x 2.5" x 3/4" (88.9mm x 63.5mm x 19.0mm).

SITESTAT REMOTE INDOOR RETURN AIR DUCT TEMPERATURE SENSOR

Model Number: SS-DUCT

Return air duct sensor assembly with 7 1/2" (190.5mm) probe. Connects directly to SiteStat. Up to six sensors can be daisy-chained together. Automatic averaging for multiple sensors. 3-wire connection to SiteStat. Standard gangbox. Sensor dimensions: 3.5" x 2.5" x 3/4" (88.9mm x 63.5mm x 19.0mm).

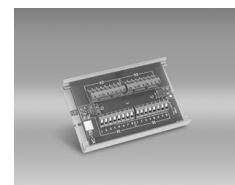


ACCESSORIES

SITESTAT TERMINAL BOARD

Model Number: SS-TB45

Supports up to eight addressable SiteStat thermostats and provides terminators for both communications and power. Screw terminal connections for 24 AWG CAT5 wire. Use for any SiteStat wiring need. Dimensions: 5" x 3" x 1" (127.0mm x 76.2mm x 25.4mm).



AUXILIARY POWER SUPPLIES

Model Number: SS-PWR16

Spare 16 VAC Power Supply for SS-SCI (Serial Communications Interface)

Model Number: SS-PWR24

24 VAC power wall pack for SiteStat Thermostats. Converts 110 VAC to 24 VAC @883 mA

Andover Controls Corp. World Headquarters

300 Brickstone Square
Andover, Massachusetts
01810 USA
Tel: +1 978 470 0555
Fax: +1 978 470 0946

Andover Controls Ltd. Europe

Smisby Road
Ashby-de-la-Zouch
Leicestershire LE65 2UG
England
Tel: +44 1530 417733
Fax: +44 1530 415436

Andover Controls Germany

Am Seerhein 8
D-78467 Konstanz
Germany
Tel: +49 7531 99370
Fax: +49 7531 993710

Andover Controls France

Immeuble Dolomites 2
58 Rue Roger Salengro
94120 Fontenay Sous Bois
France
Tel: +33 1 53 99 16 16
Fax: +33 1 53 99 16 15

Andover Controls Poland

Radzikowskiego 56
31-315 Krakow
Poland
Tel: +48 12 638 5500
Fax: +48 12 638 5501

Andover Controls Asia

Unit 1201-02, Phase 1,
Cheuk Nang Centre
9 Hillwood Road,
Tsim Sha Tsui East
Kowloon, Hong Kong
Tel: +852 2739 5497
Fax: +852 2739 7350

Andover Controls Latin America

Insurgentes 1722-501
Col. Florida
Mexico D.F. 01030,
Mexico
Tel: +5255 5661 5672
Fax: +5255 5661 5415

AndoverControls

WE'RE BUILDING SMART

A Balfour Beatty Company

www.andovercontrols.com